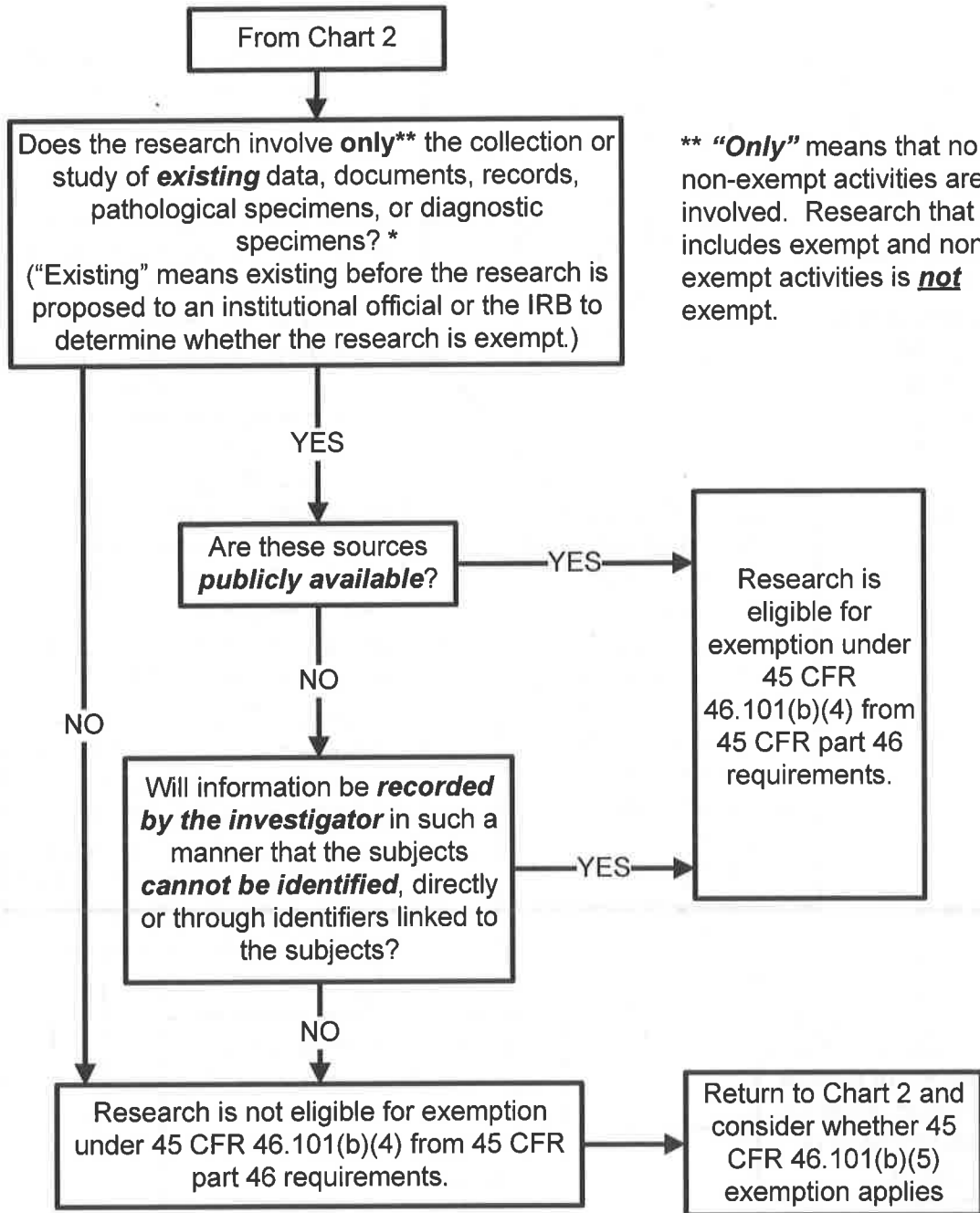


Chart 5: Does Exemption 45 CFR 46.101(b)(4) (for Existing Data Documents and Specimens) Apply?



* Note: See OHRP guidance on research use of stored data or tissues and on stem cells at <http://www.hhs.gov/ohrp/regulations-and-policy/guidance/guidance-on-research-involving-stem-cells/index.html>, and on coded data or specimens at <http://www.hhs.gov/ohrp/regulations-and-policy/guidance/research-involving-coded-private-information/index.html> for further information on those topics.